



DAIDOMON[®]



焼肉の大同門

Since 1982

Daidomon Set Menu & Ala Carte



DAIDOMON



焼肉の大同門
Since 1982

101 BEEF YAKINIKU SET 🍖



DAIDOMON



焼肉の大同門
Since 1982

102 BEEF YAKINIKU SET 🍖



*Actual look and portion may vary with pictures showed.

*Photos are illustration purpose only. Actual look may vary.

103 Wagyu Beef Yakiniku Set 🍖

DAIDOMON



- Wagyu Beef, Tokujo Karubi, Tokujo Rosu, Tongue with Leek, Mix Vegetable, Kimuchi, Yasai Salad and Fruit come with Rice and Soup.
(Meat per portion 100gm)

RM 68.00

Tamago Soup



Miso Soup

Wakame Soup

104 Assorted Meat Yakiniku Set

DAIDOMON



- Lamb Intercostal, Boneless Chicken, Chicken Wing, Mix Vegetable, Kimuchi, Yasai Salad and Fruit come with Rice and Soup.
(Meat per portion 100gm)

RM 28.00

Tamago Soup



Miso Soup

Wakame Soup

Price subject to 10% Service Charge and 6% Gov. Tax.

DAIDOMON



焼肉の大将
Since 1982

105 Assorted Seafood Yakiniku Set



Tamago Soup

- Oyster Butter (3pcs), Butter Fish, Scallop (3 pcs), Mix Vegetable, Kimuchi, Yasai Salad and Fruit come with Rice and Soup.

RM 38.00



Miso Soup

or



Wakame Soup

DAIDOMON



焼肉の大将
Since 1982

106 Assorted Seafood Yakiniku Set



Tamago Soup

- Salmon Fish, Prawn (3 pcs), Cuttlefish, Mix Vegetable, Yasai Salad and Fruit come with Rice and Soup.
(Meat per portion 100gm)

RM 38.00



Miso Soup

or



Wakame Soup

*Price subject to 10% Service Charge and 6% Gov.Tax.

*Photos are illustration purpose only. Actual look may vary.

201 California Roll Sushi Set



DAIDOMON



- **CALIFORNIA ROLL**
*Crab Meat, Omelette & Avocado Roll
Topped with Flying Fish Roe*

RM 25.00

- **CHAWAN MUSHI**
Steamed Egg Custard
- **YASAI SALAD**
Assorted Fresh Vegetables Salad

202 Spider Roll Sushi Set



DAIDOMON



- **SPIDER ROLL**
*Soft shell Crab, Avocado
and Lettuce Roll*
- **POTATO SALAD**
Japanese Style Potato Salad
- **AGEDASHI TOFU**
*Deep Fried Bean Curd with
Dipping Sauce*

RM 25.00

*Price subject to 10% Service Charge and 6% Gov.Tax.
*Photos are illustration purpose only. Actual look may vary.

DAIDOMON



焼肉の大同門
Since 1982

203 Futo Maki Sushi Set



- **FUTO MAKI**
Seven Kinds of Traditional Ingredients Rolled Sushi
- **YASAI SALAD**
Assorted Fresh Vegetables Salad
- **MISO SOUP**
Bean Paste Soup
- or
- **WAKAME SOUP**
Seaweed Soup
- or
- **TAMAGO SOUP**
Egg Soup with Vegetables

RM 28.00

204 Rainbow Roll Sushi Set

DAIDOMON



焼肉の大同門
Since 1982



- **RAINBOW ROLL**
Avocado Roll Topped with Tuna, Salmon & Sea Bream
- **TOFU SALAD**
Tofu Salad
- **MISO SOUP**
Bean Paste Soup
- or
- **WAKAME SOUP**
Seaweed Soup
- or
- **TAMAGO SOUP**
Egg Soup with Vegetables

RM 28.00

**Actual look and portion may vary with pictures showed.*

**Photos are illustration purpose only. Actual look may vary.*

205 Sushi Moriawase Set

DAIDOMON



焼肉の大将
Since 1982



- **SUSHI MORIAWASE**
Assorted Nigiri Sushi

- **YASAI SALAD**
Assorted Fresh Vegetables Salad

- **MISO SOUP** or **WAKAME SOUP** or **TAMAGO SOUP**
Bean Paste Soup or Seaweed Soup or Egg Soup with Vegetables

RM 30.00

206 Assorted Handroll Set

DAIDOMON



焼肉の大将
Since 1982



- **HANDROLL**
Assorted Handroll

- **TOFU SALAD**
Tofu Salad

RM 28.00

- **MISO SOUP** or **WAKAME SOUP** or **TAMAGO SOUP**
Bean Paste Soup or Seaweed Soup or Egg Soup with Vegetables

**Price subject to 10% Service Charge and 5% Gov.Tax.*

DAIDOMON



焼肉の大同門
Since 1982

207 Shake Sashimi Set



- CHAWAN MUSHI
Steamed Egg Custard
- TOFU SALAD
Chilled Bean Curd with Vegetable
- SHAKE
Sashimi Salmon

RM 25.00

DAIDOMON



焼肉の大同門
Since 1982

208 Maguro Sashimi Set



- MAGURO
Sashimi Blue Fin Tuna
- CHAWAN MUSHI
Steamed Egg Custard
- TOFU SALAD
Chilled Bean Curd with Vegetable

RM 25.00

*Price subject to 10% Service Charge and 6% Gov.Tax.
*Photos are illustration purpose only. Actual look may vary.

301 Ebi No Wasabi Mayo Ae Set



DAIDOMON



築肉の大向門

Since 1982



RICE
or



POTATO WEDGES

- **EBI NO WASABI MAYO AE**
Grilled Prawn with Wasabi Mayonnaise
- **YASAI SALAD**
Assorted Fresh Vegetables Salad
- **MISO SOUP** or **WAKAME SOUP** or **TAMAGO SOUP**
Bean Paste Soup or Seaweed Soup or Egg Soup with Vegetables

RM 28.00

302 Deep Fried Prawn Set



DAIDOMON



築肉の大向門

Since 1982



RICE
or



POTATO WEDGES

- **DEEP FRIED PRAWN**
- **TOFU SALAD**
Chilled Bean Curd with Vegetable Salad
- **MISO SOUP** or **WAKAME SOUP** or **TAMAGO SOUP**
Bean Paste Soup or Seaweed Soup or Egg Soup with Vegetables

RM 28.00

* Price subject to 10% Service Charge and 6% Gov. Tax.
* Photos are illustration purpose only. Actual look may vary.

DAIDOMON



焼肉の大将
Since 1982

303 Ebi Mentai Mayo Yaki Set



- **EBI MENTAI MAYO YAKI**
Grilled Prawn Topped with Cod Roe and Mayonnaise
- **YASAI SALAD**
Assorted Fresh Vegetables Salad
- **MISO SOUP** or **WAKAME SOUP** or **TAMAGO SOUP**
Bean Paste Soup or Seaweed Soup or Egg Soup with Vegetables

RM 28.00

DAIDOMON



焼肉の大将
Since 1982

304 Ebi Tempura Set



- **EBI TEMPURA SET**
Deep Fried Prawn
- **TOMATO SARADA**
Cherry Tomato and Mixed Lettuce Salad
- **MISO SOUP** or **WAKAME SOUP** or **TAMAGO SOUP**
Bean Paste Soup or Seaweed Soup or Egg Soup with Vegetables

RM 28.00

**Actual look and portion may vary with pictures showed.
Photos are illustration purpose only. Actual look may vary.

3 1/4 Ika Maru Yaki Set



DAIDOMON



焼肉の大同門
Since 1982



- **IKA MARU YAKI**
Grilled Whole Squid
- **TOFU SALAD**
Chilled Bean Curd with
Vegetable Salad

- **MISO SOUP**
Bean Paste Soup
or
WAKAME SOUP
Seaweed Soup
or
TAMAGO SOUP
Egg Soup with Vegetables



RICE
or



POTATO WEDGES

RM 25.00

306 Shiro Maguro No Enoki Maki Set



DAIDOMON



焼肉の大同門
Since 1982



- **SHIRO MAGURO NO ENOKI MAKI**
Golden Mushroom
Rolled with Grill Butter Fish
- **YASAI SALAD**
Assorted Fresh
Vegetables Salad
- **MISO SOUP** or **WAKAME SOUP** or **TAMAGO SOUP**
Bean Paste Soup or Seaweed Soup or Egg Soup with Vegetables



RICE
or



POTATO WEDGES

RM 18.00

Price subject to 10% Service Charge and 6% Gov. Tax.

DAIDOMON



焼肉の大同門
Since 1982

307 Saba Shio Yaki Set 🍣



- **SABA SHIO YAKI**
Grilled Mackerel
- **MISO SOUP**
Bean Paste Soup
- **TOFU SALAD**
Chilled Bean Curd with Vegetable Salad
- **WAKAME SOUP**
Seaweed Soup
- **TAMAGO SOUP**
Egg Soup with Vegetables

RM 18.00

DAIDOMON



焼肉の大同門
Since 1982

308 Shake Teriyaki Set



- **SHAKE TERIYAKI**
Grilled Salmon with Teriyaki Sauce
- **MISO SOUP**
Bean Paste Soup
- **YASAI SALAD**
Assorted Fresh Vegetables Salad
- **WAKAME SOUP**
Seaweed Soup
- **TAMAGO SOUP**
Egg Soup with Vegetables

RM 25.00

**Actual look and portion may vary with pictures showned.*

**Photos are illustration purpose only. Actual look may vary.*

309 Unagi Kabayaki Set



DAIDOMON



焼肉の大同門
Since 1982



RICE
or



POTATO WEDGES

- **UNAGI KABAYAKI SET**
Roasted Grilled Eel
- **YASAI SALAD**
Assorted Fresh Vegetables Salad
- **CHAWAN MUSHI**
Steamed Egg Custard

RM 33.00

310 Chicken Wing Set



DAIDOMON



焼肉の大同門
Since 1982



RICE
or



POTATO WEDGES

- **CHICKEN WING**
Deep Fried Chicken Wing
- **YASAI SALAD**
Assorted Fresh Vegetables Salad
- **MISO SOUP**
Bean Paste Soup
- or
- **WAKAME SOUP**
Seaweed Soup
- or
- **TAMAGO SOUP**
Egg Soup with Vegetables

RM 15.00

Price subject to 10% Service Charge and 6% Gov. Tax.



DAIDOMON



焼肉の大門
Since 1982

311 Tori Kara Age Set



- **TORI KARA AGE**
Deep Fried Chicken
- **TOFU SALAD**
Chilled Bean Curd with Vegetable Salad
- **MISO SOUP**
Bean Paste Soup
- or
- **WAKAME SOUP**
Seaweed Soup
- or
- **TAMAGO SOUP**
Egg Soup with Vegetables

RM 18.00



DAIDOMON



焼肉の大門
Since 1982

312 Tori Teriyaki Set 🍷

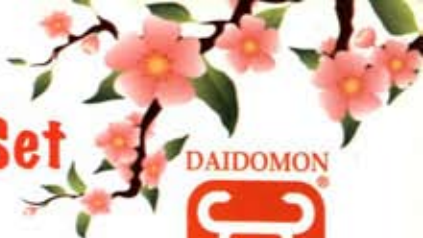


- **TORI TERIYAKI**
Grilled Chicken with Teriyaki Sauce
- **YASAI SALAD**
Assorted Fresh Vegetables Salad
- **MISO SOUP**
Bean Paste Soup
- or
- **WAKAME SOUP**
Seaweed Soup
- or
- **TAMAGO SOUP**
Egg Soup with Vegetables

RM 18.00

**Actual look and portion may vary with pictures showed.
Photos are illustration purpose only. Actual look may vary.

313 Sausage Moriawase Set



DAIDOMON



焼肉の大同門
Since 1982



- **SAUSAGE MORIAWASE** Pan Fried Assorted Beef/Chicken Sausage
- **YASAI SALAD** Assorted Fresh Vegetables Salad
- **MISO SOUP** or **WAKAME SOUP** or **TAMAGO SOUP**
Bean Paste Soup or Seaweed Soup or Egg Soup with Vegetables

POTATO WEDGES

RM 18.00

314 Garlic Chahan Set



DAIDOMON



焼肉の大同門
Since 1982



- **GARLIC CHAHAN**
Garlic Fried Rice with Egg
- **TOMATO SARADA**
Cherry Tomato and Mixed Lettuce Salad
- **CHAWAN MUSHI**
Steamed Egg Custard

RM 15.00

Price subject to 10% Service Charge and 6% Gov. Tax.

DAIDOMON



焼肉の大同門

Since 1982

315 Kimunchi Chahan Set

- **KIMUCHI CHAHAN**
Fried Rice with
Kimunchi Pickle
and Chicken
- **YASAI SALAD**
Assorted Fresh
Vegetables Salad
- **CHAWAN MUSHI**
Steamed Egg Custard

RM 15.00



DAIDOMON



焼肉の大同門

Since 1982

316 Shake Chahan Set 🍴

- **SHAKE CHAHAN**
Salmon Flake Fried Rice
- **YASAI SALAD**
Assorted Fresh
Vegetables Salad
- **MISO SOUP**
Bean Paste Soup
or
WAKAME SOUP
Seaweed Soup
or
TAMAGO SOUP
Egg Soup with
Vegetables

RM 15.00



**Actual look and portion may vary with pictures showed.*

**Photos are illustration purpose only. Actual look may vary.*

317 Kimunchi Yaki Udon Set



DAIDOMON



- **KIMUCHI YAKI UDON**
Fried Wheat Noodle with Chicken, Kimunchi & Vegetables
- **YASAI SALAD**
Assorted Fresh Vegetables Salad
- **MISO SOUP**
Bean Paste Soup
or
WAKAME SOUP
Seaweed Soup
or
TAMAGO SOUP
Egg Soup with Vegetables

RM 18.00

318 Karubi Ramen/Udon Set



DAIDOMON



- **KARUBI RAMEN/UDON**
Noodle Served in Stewed Beef Paste soup with Beef, Vegetables and Egg
- **YASAI SALAD**
Assorted Fresh Vegetables Salad
- **AGEDASHI TOFU**
Deep Fried Bean Curd with Dipping Sauce

RM 18.00

Price subject to 10% Service Charge and 6% Gov.Tax.

DAIDOMON



焼肉の大同門
Since 1982

319 Shoyu Or Miso Ramen Set

- **SHOYU RAMEN OR MISO RAMEN**

Yellow Noodle with Egg,
Stewed Chicken & Vegetables
in Soyu or Miso Soup

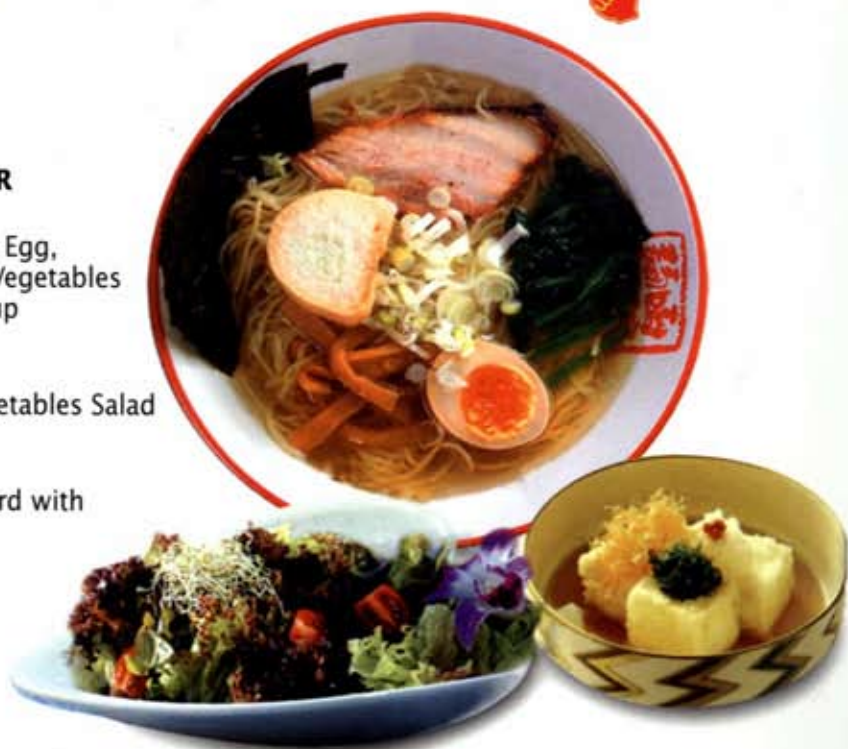
- **YASAI SALAD**

Assorted Fresh Vegetables Salad

- **AGEDASHI TOFU**

Deep Fried Bean Curd with
Dipping Sauce

RM 18.00



DAIDOMON



焼肉の大同門
Since 1982

320 Yukkejyan Ramen Udon Set

- **RAMEN OR UDON**

Noodle served in
Bean Paste Soup With Beef,
Vegetables & Egg

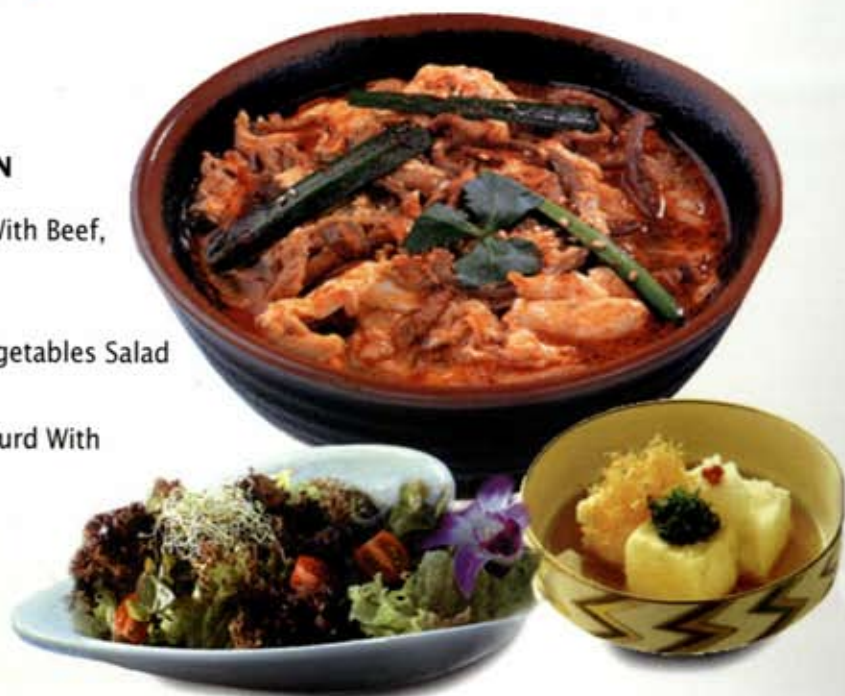
- **YASAI SALAD**

Assorted Fresh Vegetables Salad

- **Agedashi Tofu**

Deep Fried Bean Curd With
Dipping Sauce

RM 18.00



**Price subject to 10% Service Charge and 6% Gov.Tax.*

**Photos are illustration purpose only. Actual look may vary.*

321 Una Tama Don Set



DAIDOMON



焼肉の大同門
Since 1982



- **MISO SOUP**
Bean Paste Soup
or
WAKAME SOUP
Seaweed Soup
or
TAMAGO SOUP
Egg Soup with Vegetables

- **UNA TAMA DON**
Grilled Eel, Vegetable with Egg in Sweet sauce Topped on Rice
- **YASAI SALAD**
Assorted Fresh Vegetables Salad

RM 20.00

322 Oyako Don Set



DAIDOMON



焼肉の大同門
Since 1982



- **MISO SOUP**
Bean Paste Soup
or
WAKAME SOUP
Seaweed Soup
or
TAMAGO SOUP
Egg Soup with Vegetables

- **OYAKO DON**
Chicken, Vegetable with Egg in Sweet Sauce Topped on Rice
- **YASAI SALAD**
Assorted Fresh Vegetables Salad

RM 15.00

* Price subject to 10% Service Charge and 3% Gov.Tax.
* Photos are illustration purpose only. Actual look may vary.

DAIDOMON



焼肉の大将門
Since 1982

323 Saikoro Steak Set



- **SAIKORO STEAK**
Diced Cut Beef & Raddish with Citrus Sauce
- **YASAI SALAD**
Assorted Fresh Vegetables Salad
- **MISO SOUP** or **WAKAME SOUP** or **TAMAGO SOUP**
Bean Paste Soup or Seaweed Soup or Egg Soup with Vegetables

RM 23.00

DAIDOMON



焼肉の大将門
Since 1982

324 Chicken Kimuchi Set



- **CHICKEN KIMUCHI**
Chicken & Kimuchi Pickle served in hot plate
- **YASAI SALAD**
Assorted Fresh Vegetables Salad
- **MISO SOUP** or **WAKAME SOUP** or **TAMAGO SOUP**
Bean Paste Soup or Seaweed Soup or Egg Soup with Vegetables

RM 18.00

**Actual look and portion may vary with pictures showed.*

**Photos are illustration purpose only. Actual look may vary.*

325 Chicken Katsu Set



- **CHICKEN KATSU**
Breaded Deep Fried Chicken serve with rice
- **YASAI SALAD**
Assorted Fresh Vegetables Salad

RM 15.00

- **MISO SOUP**
Bean Paste Soup
or
WAKAME SOUP
Seaweed Soup
or
TAMAGO SOUP
Egg Soup with Vegetables



DAIDOMON



焼肉の大同門
Since 1982

326 Kinoko Butter



- **KINOKO BUTTER**
Assorted Mushroom with Butter
- **YASAI SALAD**
Assorted Fresh Vegetables Salad

RM 15.00

- **MISO SOUP**
Bean Paste Soup
or
WAKAME SOUP
Seaweed Soup
or
TAMAGO SOUP
Egg Soup with Vegetables



DAIDOMON



焼肉の大同門
Since 1982

* Price subject to 10% Service Charge and 5% Gov.Tax.
* Photos are illustration purpose only. Actual look may vary.



DAIDOMON



焼肉の大同門
Since 1982

327 Curry Katsu Set



- **CHICKEN KATSU**
Breaded Deep Fried Chicken serve with rice
- **CURRY**
Japanese Curry *BEEF*
- **YASAI SALAD**
Assorted Fresh Vegetables Salad
- **MISO SOUP**
Bean Paste Soup
or
WAKAME SOUP
Seaweed Soup
or
TAMAGO SOUP
Egg Soup with Vegetables

RM 23.00



DAIDOMON



焼肉の大同門
Since 1982

328 Gyu/Chicken Niku Shoga Yaki Set



- **GYU/CHICKEN NIKU SHOGA YAKI**
Pan Fried Beef/Chicken and Vegetable with Ginger Sauce Set
- **YASAI SALAD**
Assorted Fresh Vegetables Salad
- **MISO SOUP** or **WAKAME SOUP** or **TAMAGO SOUP**
Bean Paste Soup or Seaweed Soup or Egg Soup with Vegetables

POTATO WEDGES

RM 18.00

*Actual look and portion may vary with pictures showed.
*Photos are illustration purpose only. Actual look may vary.

大同門

DAIDOMON®



焼肉の大同門

Since 1982

大同門

大同門



MENU

DAIDOMON WASHOKU & YAKINIKU BUFFET

大同門スペシャル
和食&焼肉食べ放題
焼肉自助餐菜單



The Best Yakiniku in town

www.daidomon.com.my

SASHIMI 刺身



1. Maguro まぐろ
Blue Fin Tuna



2. Shiro Maguro 白まぐろ
Butter Fish



3. Shake しゃけ
Salmon



4. Shime Saba しめさば
Vinegared Mackerel



5. Tako たこ
Octopus



6. Sashimi Moriawase
 刺身盛り合わせ
Assorted Raw Fish

BEEF SASHIMI 牛刺身物

7. Gyu Sashi 牛刺
Thinly Sliced Raw Beef



8. Yukke Sashi ユッケ刺
Marinated Beef w/Egg Yolk



9. Gyu Tataki 牛タタキ
Marinated Lightly Grilled Beef



Menu items are still subject to availability.
 * Photos are illustration purpose only. Actual look may vary.*

BEEF 牛肉



- 19. Tan タン
Ox Tongue
- 20. Karubi カルビ
Belly Tender
- 21. Honetsuki 骨付きカルビ
Bone In Short Rib
- 22. Rosu ロース
Striploin
- 23. Harami ハラミ
Outside Skirt
- 24. Horumon ホルモン
Large Intestine
- 25. Mino ミノ
Mountain Chain Ox Triple



OTHER MEAT 他肉

26. LAMB SHOULDER

27. Tebasaki 手羽先
Chicken Wing

28. Dachou 駝鳥
Boneless Ostrich Meat

29. Tori Momo トリモモ
Boneless Chicken



Menu items are still subject to availability.
 * Photos are illustration purpose only. Actual look may vary.*



10

10. **Sushi Moriawase**
 寿司盛り合わせ
Assorted Nigiri Sushi



11

11. **Maguro まぐろ**
Blue Fin Tuna



12

12. **Shake しゃけ**
Salmon



13

13. **Ebi えび**
Prawn



14

14. **Tako たこ**
Octopus

15. **Tamago たまご**
Sweet Egg

15

16. **Inari いなり**
Sweet Bean Curd



17. **Unagi うなぎ**
Roasted Eel

16

18. **Kani かに**
Crab Meat



17



18



Please help yourself for more varieties of maki sushi (roll sushi) serve of the day display at the sushi counter. Thank you.



SAUSAGE ソーセージ



30. Sausage Mori
ソーセージ盛り
Assorted Sausage
31. Tori Sausage
鶏ソーセージ
Chicken Sausage
32. Tori Ninniku Sausage
鶏にんにくソーセージ
Chicken Garlic Sausage
33. Tori Shitake Sausage
鶏しいたけソーセージ
Chicken Mushroom Sausage
34. Gyu Niku Sausage
牛肉ソーセージ
Beef Sausage

SEAFOOD 海鮮

35. Shake しゃけ
Salmon Fish
36. Shiro Maguro しろまぐろ
Butter Fish
37. Saba さば
Mackerel Fish
38. Gindara ぎんだら
Silver Cod Fish
39. Ebi えび
Prawn
40. Ika いか
Cuttlefish
- N/A
カキバター
Oyster with Butter
(Limited to First Serving only)
42. Hotate ホタテ
Scallop
(Limited to First Serving only)



VEGETABLES

野菜焼

DAIDOMON



焼肉の大将
Since 1982



43. Kyabetsu キャベツ
Cabbage



44. Kon コン
Corn on Cob



45. Ninniku ニンニク
Garlic



46. Piman ピーマン
Green Pepper



47. Okura オクラ
Lady's Finger



48. Naga Negi 長ネギ
Leek



49. Tama Negi 玉ネギ
Onion



50. Kabocha カボチャ
Pumpkin



51. Shitake シイタケ
Shitake Mushroom



52. Satsuma Imo サツマイモ
Sweet Potato



53. Yasai Yaki Moriawase
野菜焼盛り合わせ
Assorted Vegetable

54. Plain Rice ライス

55. Shiso Rice しそライス

Plain Rice with Perilla Leaves Powder

Menu items are still subject to availability.
* Photos are illustration purpose only. Actual look may vary.*

DAIDOMON



焼肉の大同門

Since 1982

To complement these delightful Washoku and Local Buffet dishes, please have a look at our buffet line up.

We serve grilled, deep fried and steamed food, as well as appetizer, pickle, salad, soup & dessert of the day. Please do not hesitate to ask for assistance if you require any further information.

Thank you.

